

THE HUES OF HADLEY MASSACHUSETTS

*Pioneering Places for
Preservation & Growth*

By Elisha Bettencourt





History &
Analysis

Interpretation

Program
& Design

Questions,
Discussion

Research
Background

MAP OF
HAMPSHIRE
COUNTY
MASSACHUSETTS

FROM THE SURVEYS OF WM. J. HARRIS
PUBLISHED BY
JAMES D. SLOTT & OWEN W. LERAN
THE GREAT STREET
PHILADELPHIA
1854

SCALE
200 RODS TO ONE INCH



Project Overview

- Site located in Hadley MA.
- Rich CT River Valley area
- Mix of existing buildings & land
- Former dairy farm est. 1816
- Related to the Porter-Phelps-Huntington Museum across the street
- Phelps Farm house is still largely *unexplored*.



Major Questions

How does this research contribute to new ways of:



Providing Preservation Work

This work is utilizing methods old and new for analyzing integrity and scope of work needed.



Use in Tandem

This work highlights the opportunity for historic resources to combine and function together.



Designing Site Narratives

This work explores the collaboration of historic and environmentally driven interpretation work.



Adding New Elements

This work is researching how new design can assist historic sites with interpretation, accessibility, and more.

Objectives

Areas of interest & goals for the project include:

**Establish Relationships
with New & Old
*Construction***

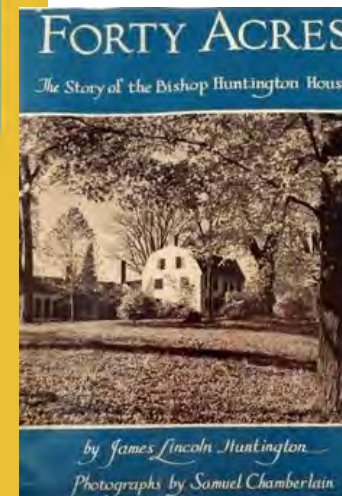
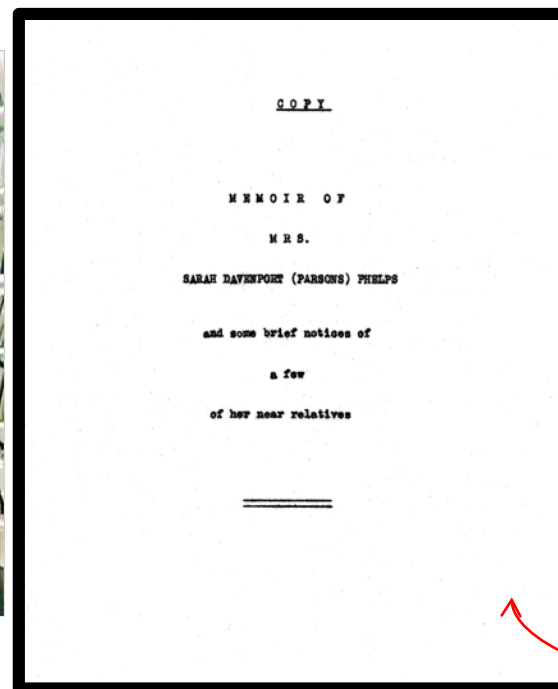
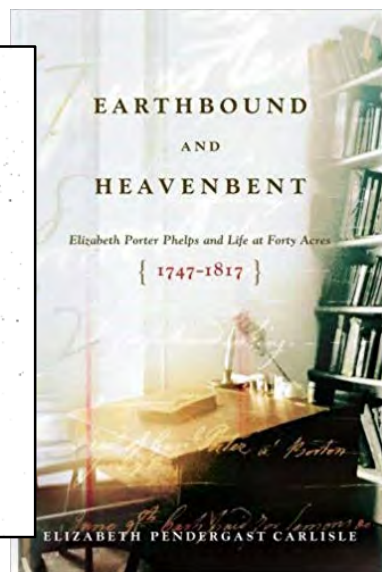
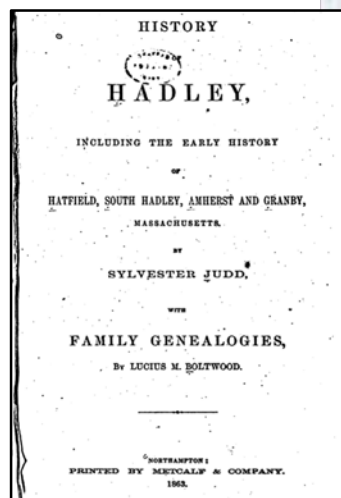
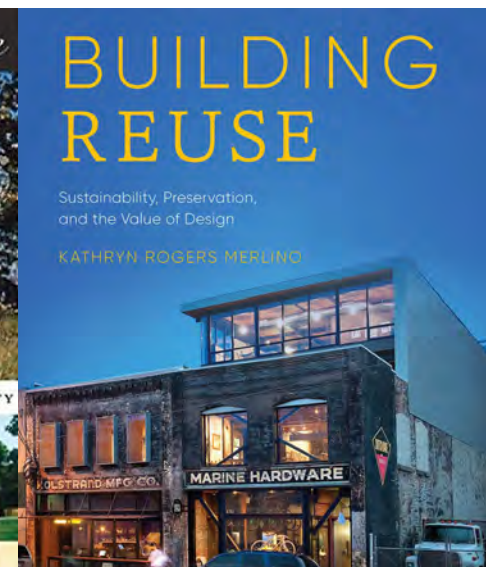
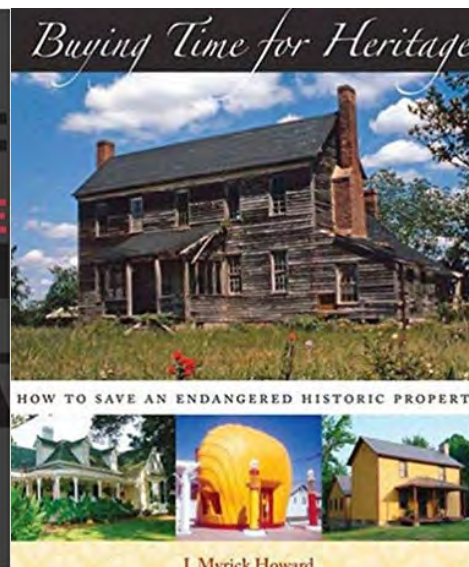
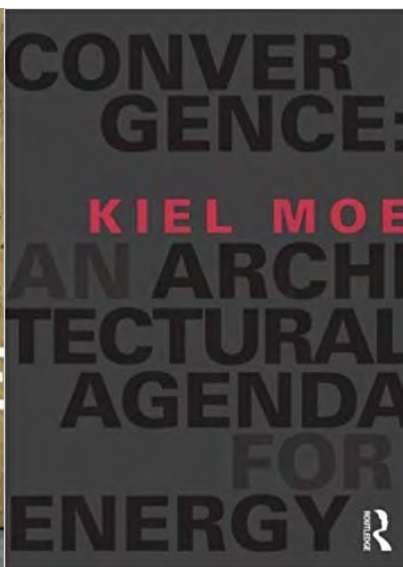


**Grow a New Type of
*Historic Resource***



**Link Historical
Narratives with the
*Environment***





Literature

consciousness

The Influential Mind

- Tali Sharot, 2017

*Anarchist's Guide to Historic
House Museums*

- F. Vagnone & D. Ryan, 2016

The New Old House:

- Marc Kristal, 2017

Old Buildings, New Designs

- H. Hardy & C. Bloszies, 2011

*Building Reuse: Sustainability,
Preservation, & the Value of Design*

- Kathryn Rogers Merlino, 2018

*Adaptive Reuse: Extending
the Lives of Buildings*

- Liliane Wong, 2016

design

"Classrooms are Going Green"
- Samantha Cleaver, 2007

"Let's Sustain This: A Review"

- Leah Glaser, 2014

preservation

1.

Reinventing the Museum

- Gail Anderson, 2012

A Richer Heritage:

- Robert E. Stripe, 2003

Buying Time for Heritage:

- J. Myrick Howard, 2007

Bending the Future: 50 Ideas for the

Next 50 Years of Historic Preservation...

- Max Page & Marla Miller, 2016

Principles of Ecological Landscape Design

- Travis Beck, 2013

Silent Spring

- Leah Glaser, 1962

Cradle to Cradle...

- W. McDonough M. Braungart, 2009

environment

Literature Analysis

Highlights of Hadley

Diverse Wildlife



Colonial Origins



Rich Ecology



Traditional Farming



Fertile
Land



Natural Resources



Native American Tribes

- Nipmuck Tribe
- Pocumtuck Tribe



Tribes That Also Used Area

- Paleo Indians
- Archaic Indians
- Abinaki Tribe
- Nonotuck Tribe

Site Context



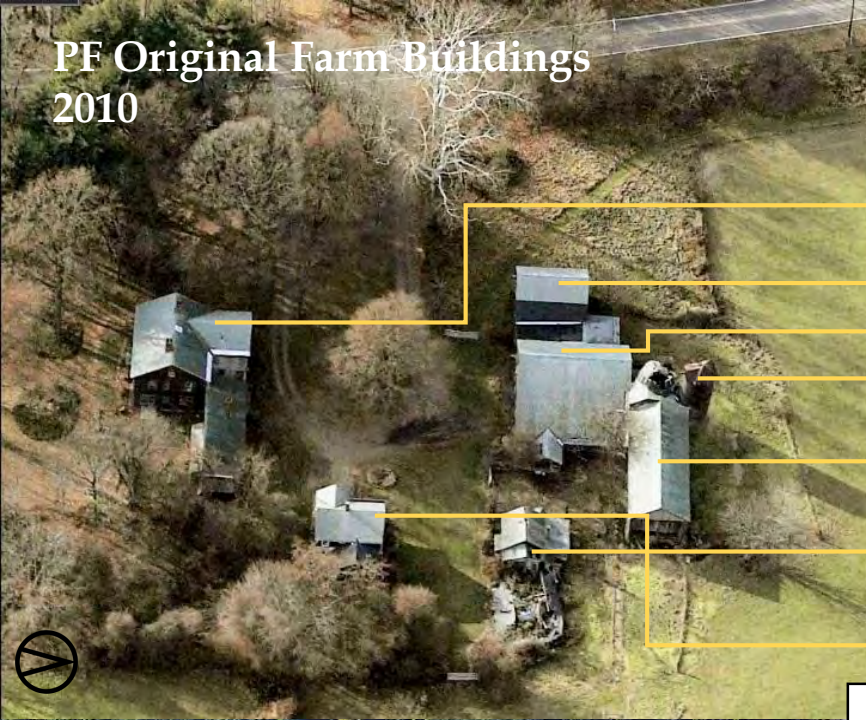


PPH

PF



PF Original Farm Buildings 2010



*Charles Porter Phelps
House*

Horse barn

Dairy barn

Silo

Hay barn

Milk House

Caretakers cottage

PF Currently Viable Buildings 2018



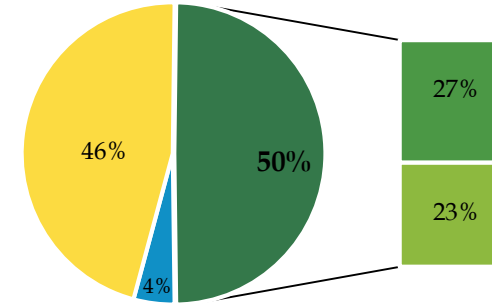
*Charles Porter Phelps
House*

Horse barn

Caretakers cottage

Existing Site

■ buildable ■ pasture ■ PPH fields ■ PF fields



Combined Acreage: 78 Acres

- This is a union & reunion
- + Leasable farmland will increase
- Assume maintenance & more property responsibilities
- + Expand foundation & mission
- + Add to interpretation of the area & family
- Coordinate use & function of 2 properties





HISTORY & ANALYSIS

Porter-Phelps-Huntington Family

Hadley MA



Phelps Farm (PF) House
1816



Porter-Phelps-Huntington (PPH) House
1752



PPH House Men's Study

Charles Porter Phelps

(1772 – 1857)



-Harvard Graduate:

Lawyer/merchant/designer/builder/farmer/Hadley Representative/Senator for Hampshire District

3 marriages: **Sarah**, Charlotte, Elizabeth

- 14 Children



“The law of kindness dwelt always upon her lips.”

“I cannot lie aside my pen without sketching a brief memorial of her worth and excellence.”

“—the heart with all its tenderest sensations, which alone form an existence worth possessing – where are they?”



south elevation



winter kitchen



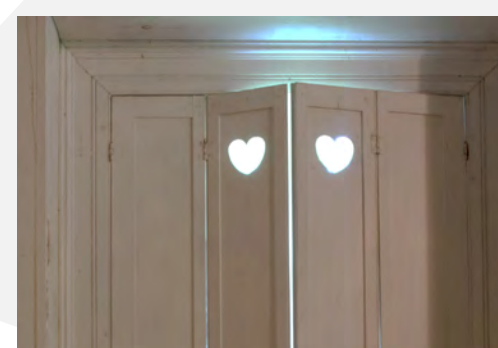
library



dining
room



north bedroom







INTERPRETATION



Framing Approach



Historic Resource

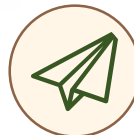
Many historic properties in New England have important historical knowledge which can help inform decisions about the area and its use.



Adaptive/Inspirational

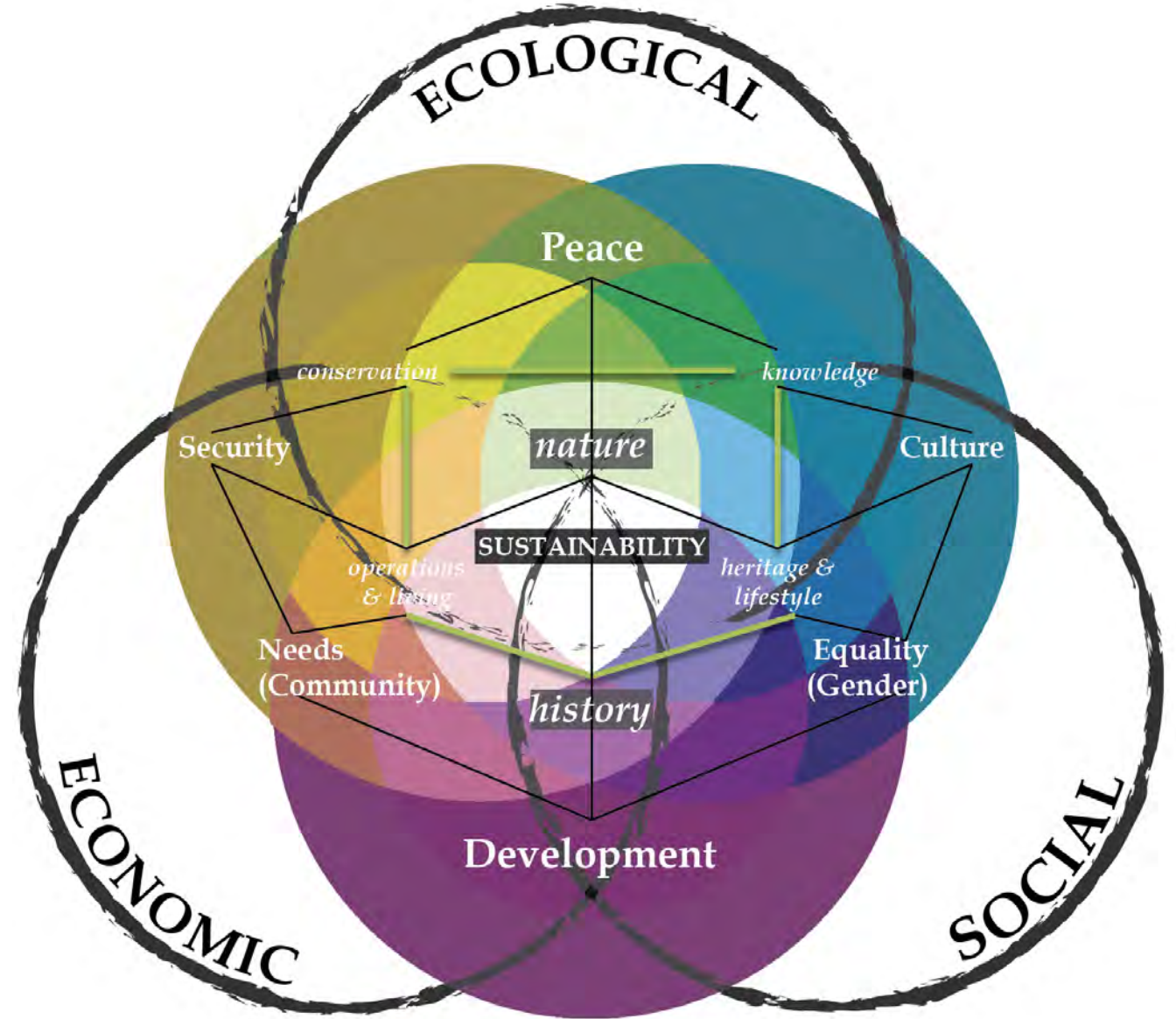
Historic properties have the power to evoke special memories and feelings which have the opportunity to connect people to new ideas.

Sharing



Community

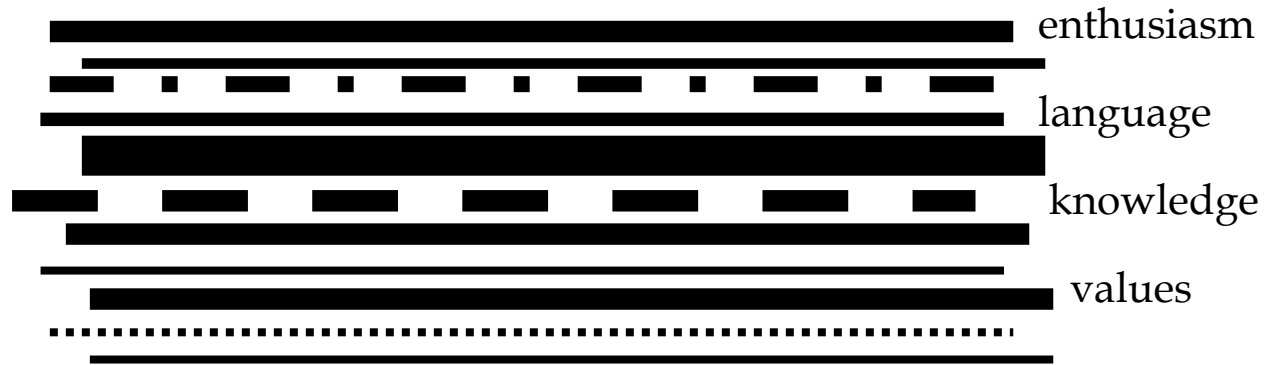
Environmental Awareness



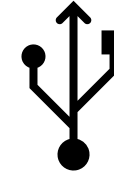
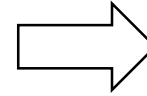
“Local historic sites can also contribute to a public awareness of sustainability by informing an increasingly mobile and transient public about their community.” – *Let's Sustain This: A Review*

New Historic Interpretation Models

EXPERT OPINION



PUBLIC UNDERSTANDING



Multiple
Functions



Recreation or
Reimagination



Exploration of
Space/
Landscape



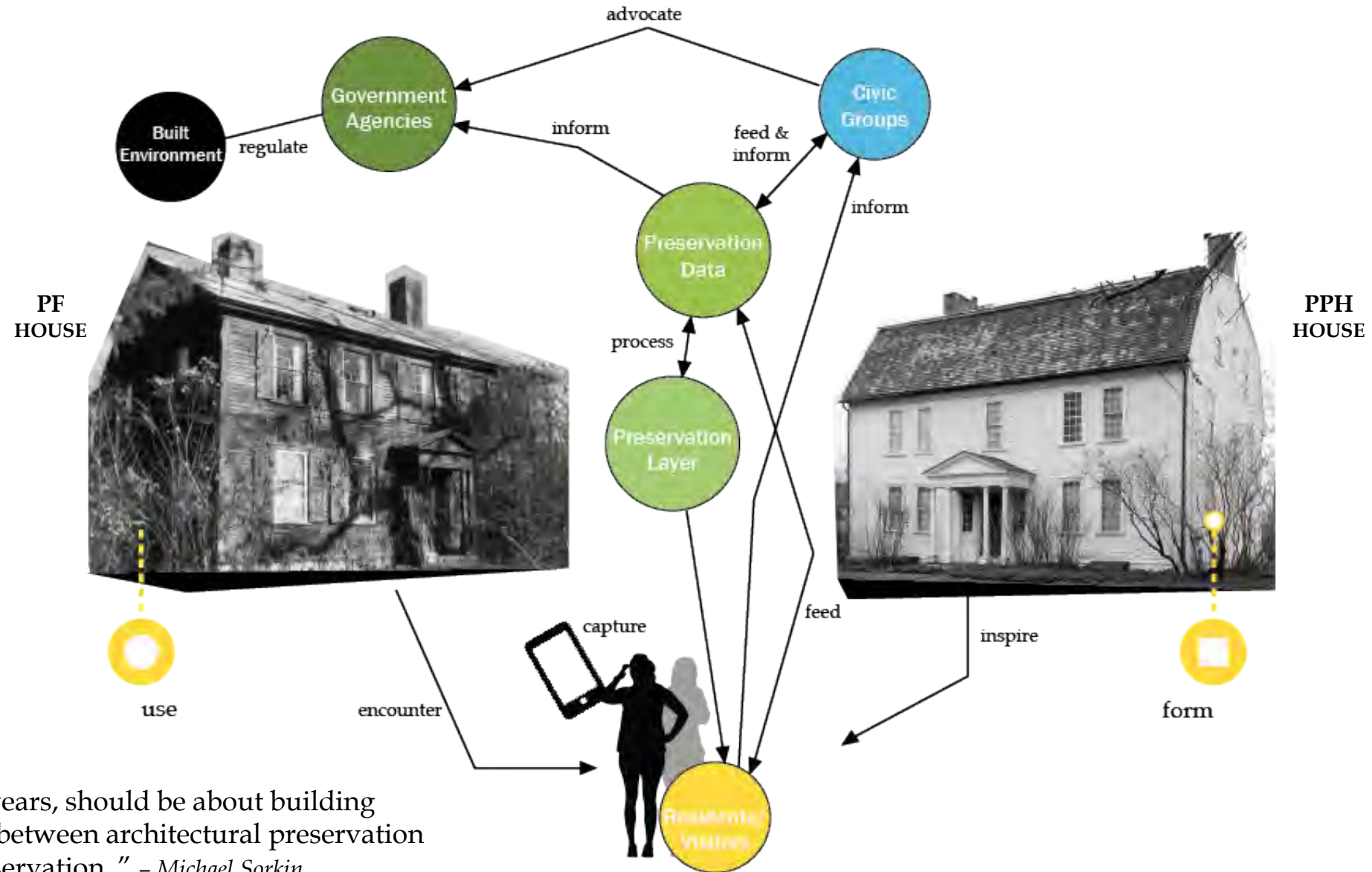
Digital
Presence



Collaborations
Outside of
History

"Stories of landscape changes and resilience can have an impact on values, and the historian can contribute by interpreting and recording those stories." – *Let's Sustain This: A Review*

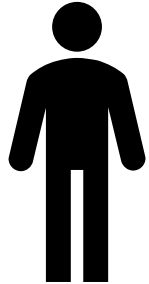
Exploration



“The next fifty years, should be about building very clear links between architectural preservation and human preservation.” – Michael Sorkin

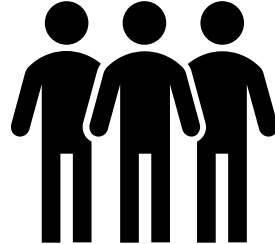
Developing Connections

*Creativity &
Innovation
Action orientation*



INDIVIDUAL

*Leadership
Teamwork
Communications*



PEOPLE SKILLS

*Better Understanding
Functional Expertise*



KNOWLEDGE

*Ethics & Values
Social Investments
Adaptive Strategies*



CITIZENSHIP

Use historic sites to activate different
relationships for new reframed
conversation channels



PROGRAM

Precedent Studies

Establish Relationships
with New & Old
Construction



Menokin House
-Warsaw, VA

Grow a New Type of
Historic Resource
With the House Museum



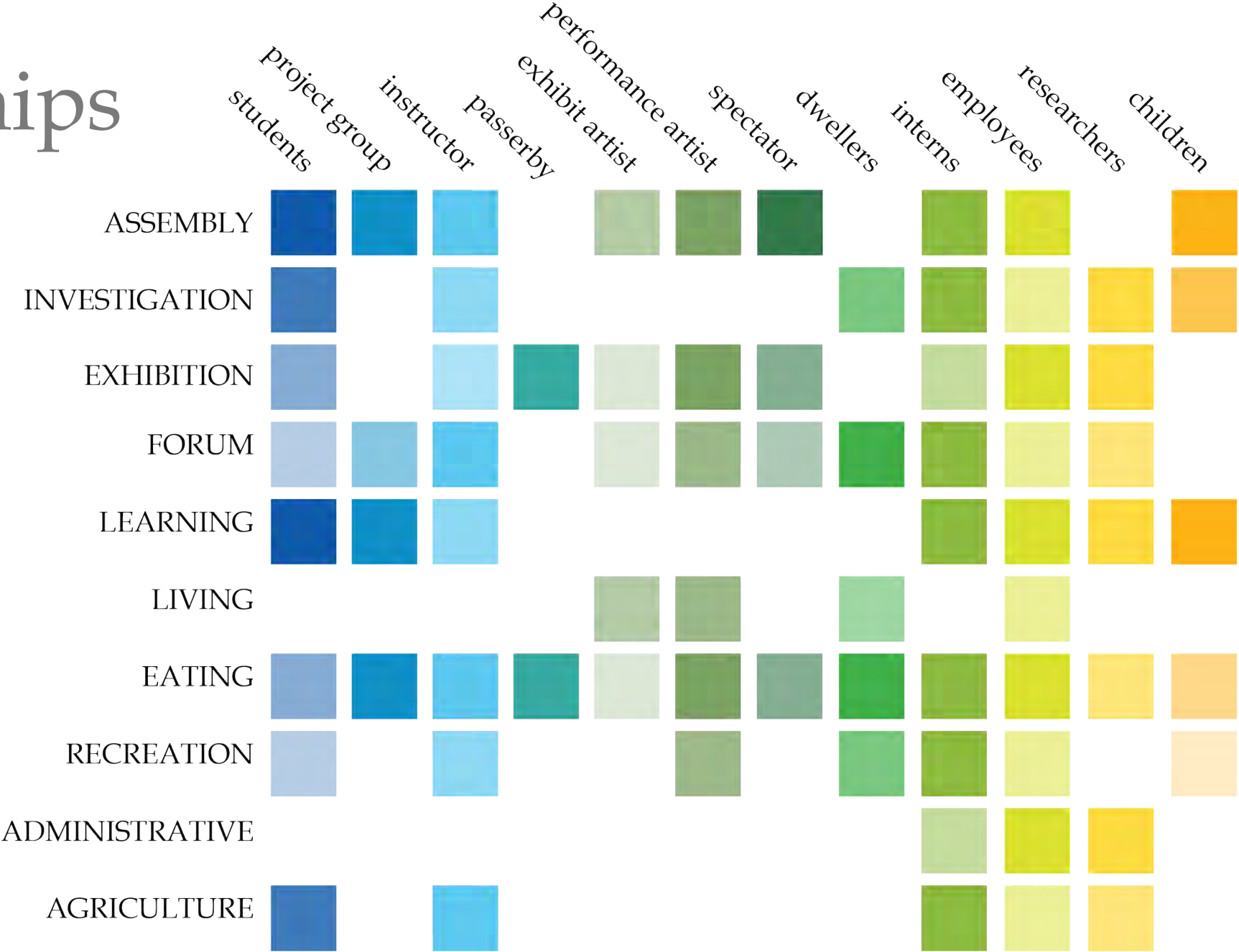
Fruitlands Museum
-Harvard, MA

Link Historical Narratives
with the *Environment*



Hitchcock Center
-Amherst, MA

Program Relationships



Program & Organization

EDUCATION

- *Classrooms or conference rooms*
- *Forum or presentation space similar to wood barn in PPH Museum*

PRESERVATION AREAS

- *Curated house space*
- *Archive space/artifact storage*

LEASABLE

- *Artist space – studio or exhibit*
- *Rental unit(s)*

RESEARCH SERVICE

- *Small office or wet lab*
- *Access to key points on properties – accommodating research set ups*

EVENT SPACE

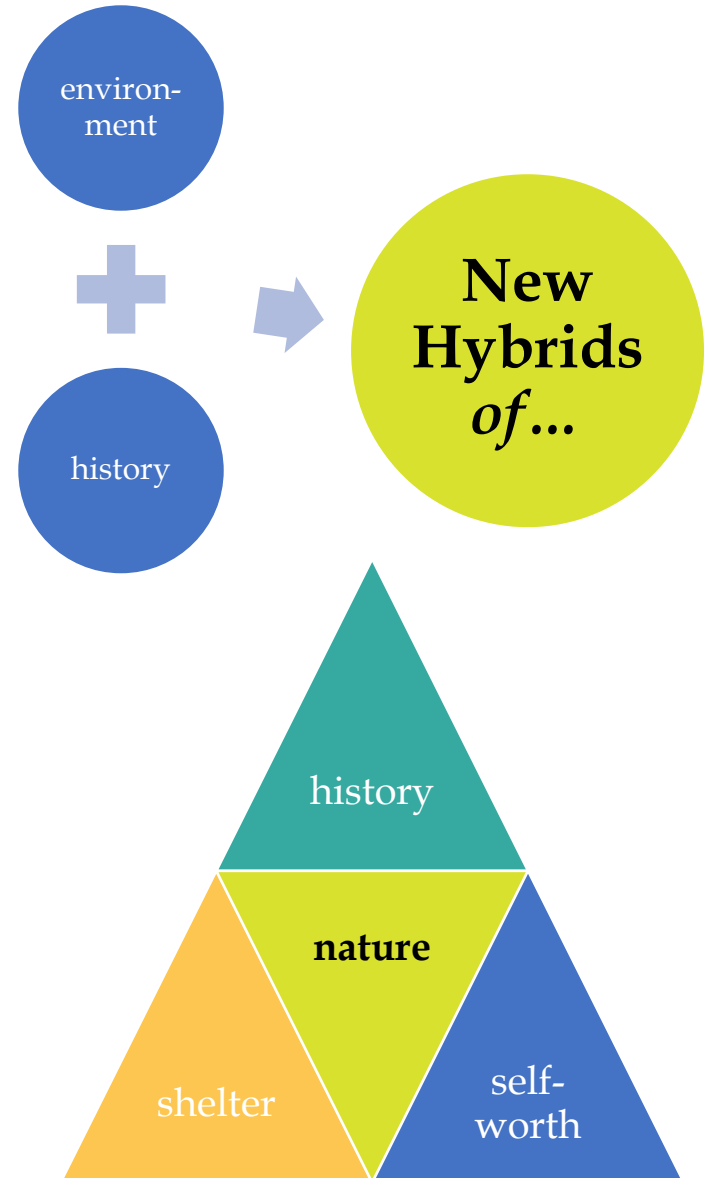
- *50 – 75 person accommodation for year round events*
- *Tie into other functions and spaces*
- *Small kitchen for catering*

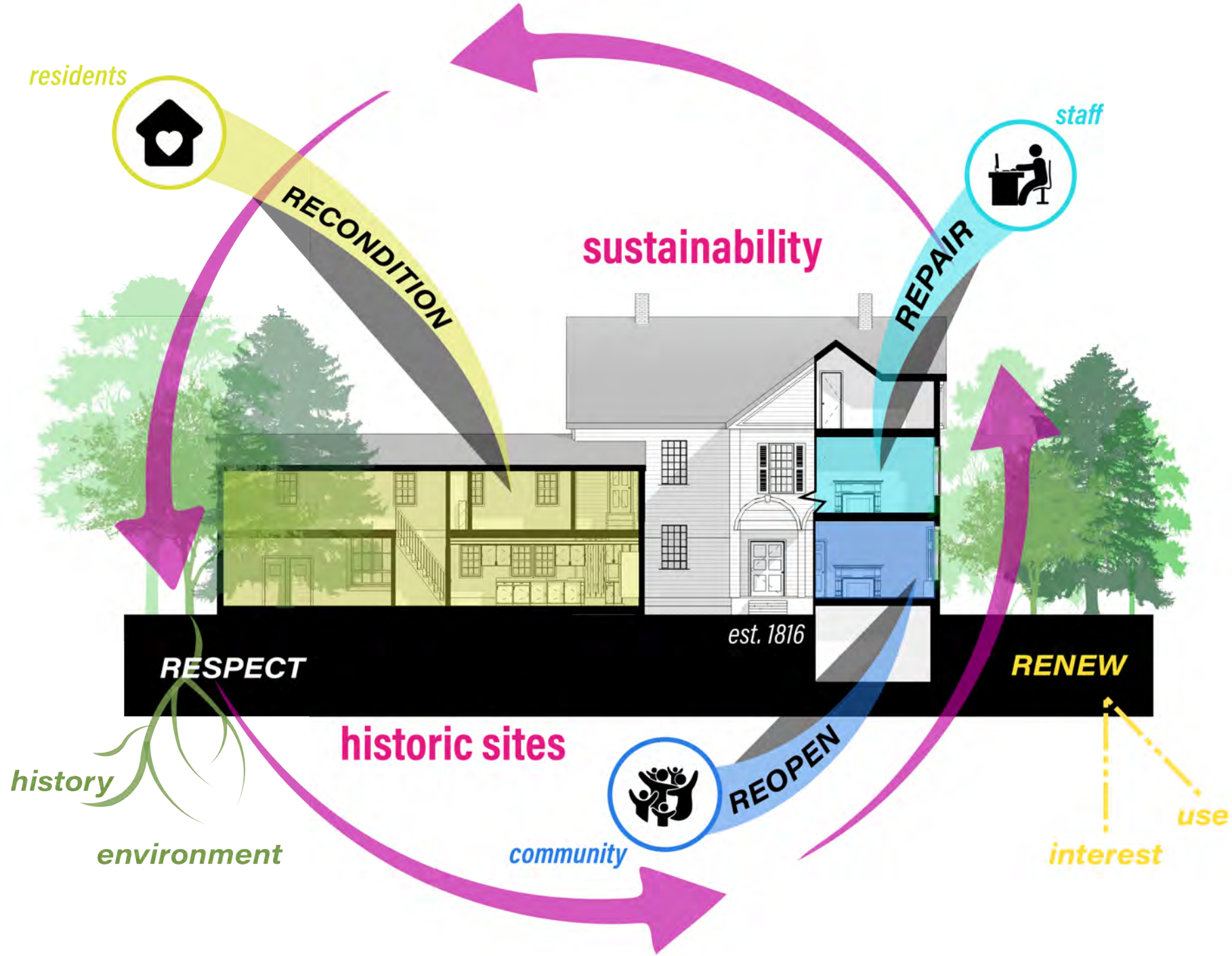
ADMINISTRATIVE SPACE

- *Office and reception spaces*

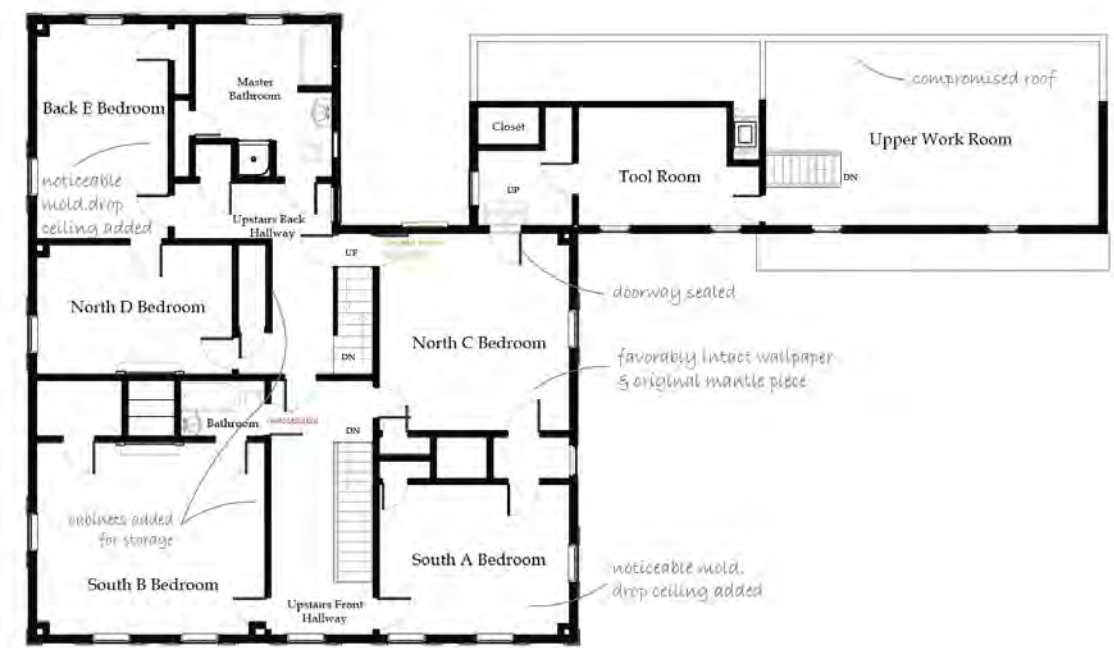
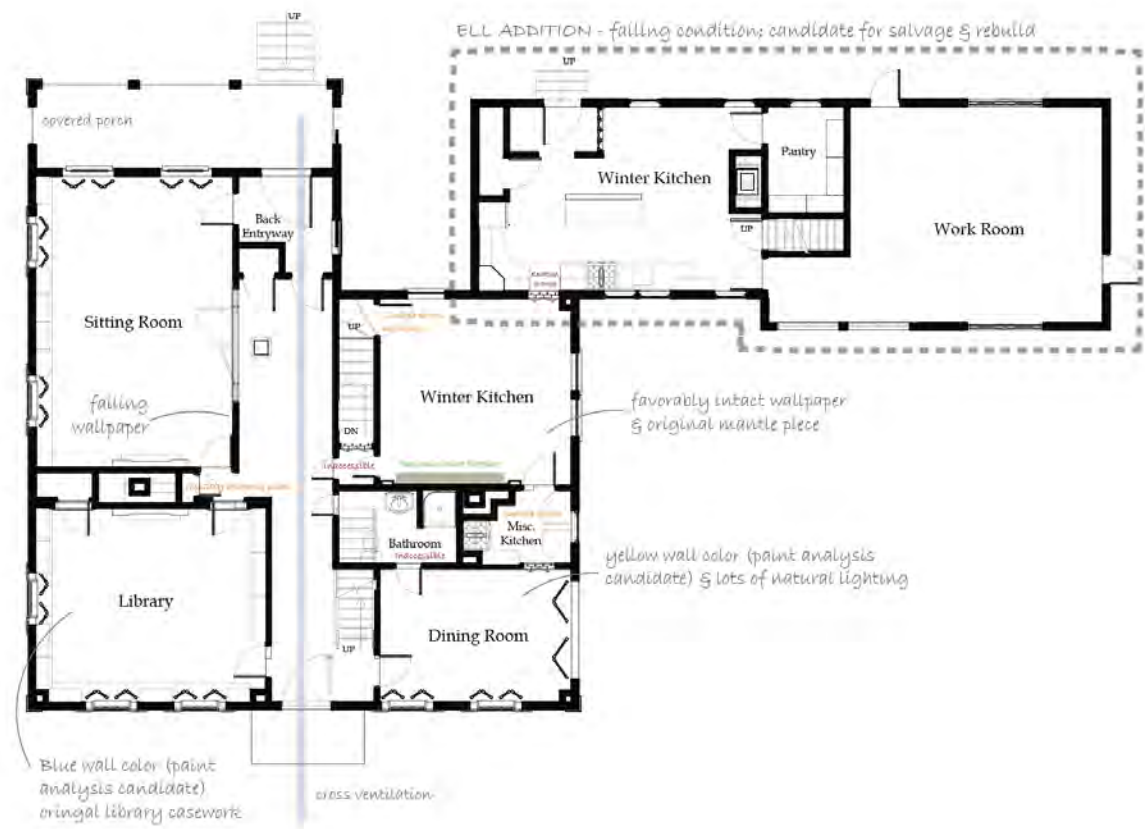
ANIMAL & ECOLOGICAL EXPOSURE

- *Indoor and outdoor space for various demonstrations and study*





Existing Structure

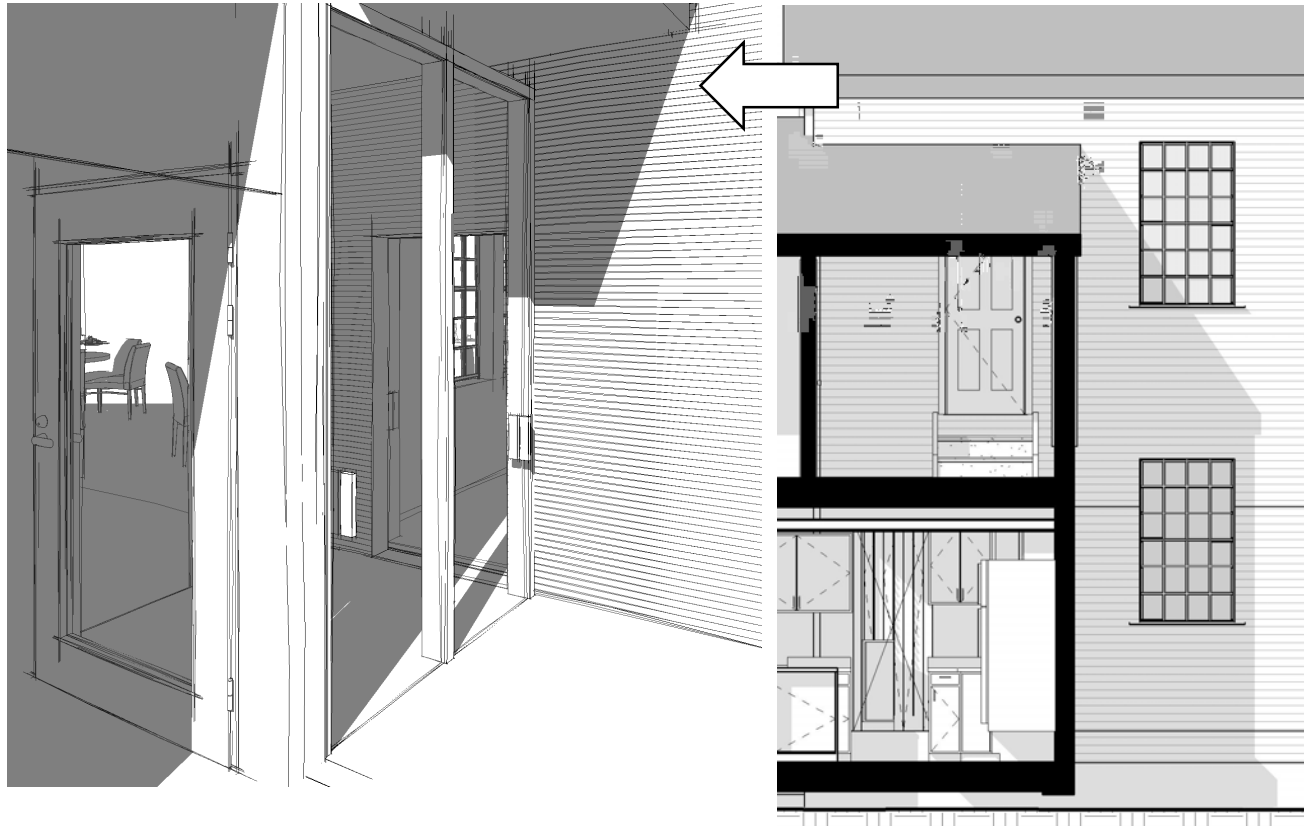


First Floor

Second Floor

Establish Entryways

Upstairs Bedroom



New Adaptable Entrance

Kitchens



Proposed New Ell



First Floor



Second Floor

Proposed Elevations



north

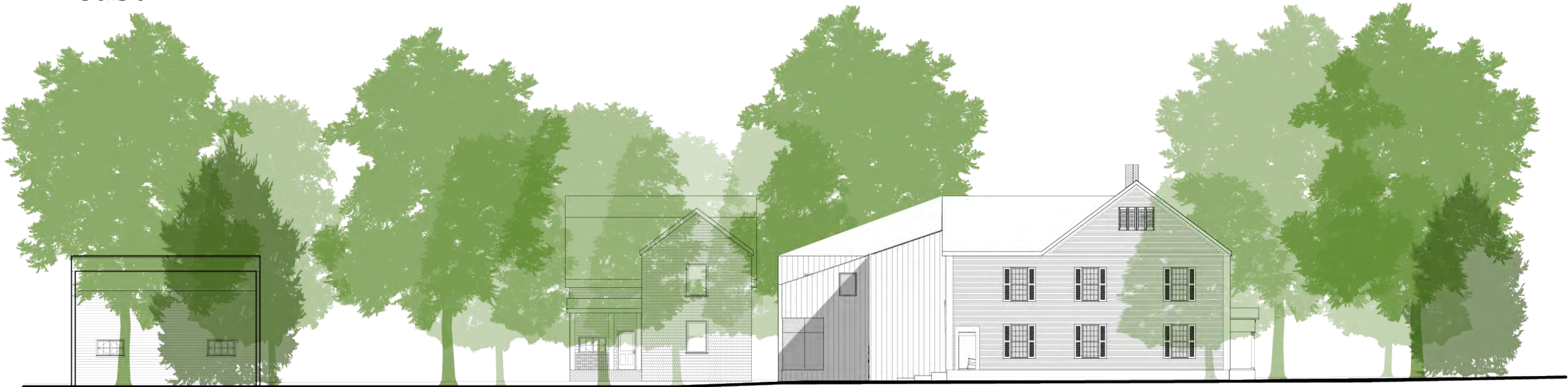


south

Proposed Elevations



east



west



forum

Adaptive Interior



banquet

Adaptive Interior



art



play



In conclusion...

Thank you!

